



**ALASKA DIVISION OF HOMELAND SECURITY &
EMERGENCY MANAGEMENT**



SITUATION REPORT 23-053 • FEBRUARY 22, 2023

Toll-Free 1.800.478.2337

Anchorage Area 907.428.7000

SEOC 907.428.7100

<p><u>SEOC Preparedness Level</u> Level 1 – Routine Operations</p>	<p>http://ready.alaska.gov</p>	<p><u>National Terrorism Advisory System:</u> Read the NTAS Bulletin here</p>
<p><u>Maritime Security (MARSEC)</u> Level:1-Minimum Appropriate Security Measures</p>	<p>WHO Novel Coronavirus Pandemic (COVID-19): 2019 Novel Coronavirus</p>	<p><u>Alaska Military Installation Force Protection Level:</u> FPCON Bravo</p>

(Significant changes from previous situation reports are in red.)

Significant Issues:

State of Alaska Department of Health (DOH)

The DOH is leading the State of Alaska COVID-19 Recovery, supported by the SEOC and other state departments as required.

For current COVID-19 information, see:

<https://covid19.alaska.gov/>

<https://www.cdc.gov/coronavirus/2019-ncov/index.html>

NTAS Bulletin

The U.S. Department of Homeland Security has issued an updated National Terrorism Advisory Bulletin. The updated bulletin can be viewed at the below link

To read current or expired advisories, click the link below:

<https://www.dhs.gov/national-terrorism-advisory-system>

Travel Alerts and Conditions

For current driving conditions dial 511 or link to <https://511.alaska.gov/>

Barry Arm Landslide / Tsunami Risk

For the latest information on the Barry Arm Landslide and Tsunami risk, click here:

[DGGs Barry Arm Landslide and Tsunami Hazard](#)

Recent Earthquakes

USGS Earthquake Information: <http://earthquake.usgs.gov/>

National Tsunami Warning Center: <http://tsunami.gov/>

Alaska Volcanoes

Great Sitkin Alert Level: Watch and Aviation Color Code: **Orange**
Semisopchnoi Alert Level: Watch and Aviation Color Code: **Orange**
Takawangah Alert Level: Advisory and Aviation Color Code: **Yellow**
For Alaska Volcano updates, go to: <https://www.avo.alaska.edu/>

Air Quality Index (AQI) Advisories

For the most up to date Air Quality Index Advisories:

<http://dec.alaska.gov/Applications/Air/airtoolsweb/Home/Index>

Spills of Oil and Hazardous Substances

The ADEC Spill Prevention and Response page is located at:

<http://dec.alaska.gov/spar/ppr/spill-information/response/>

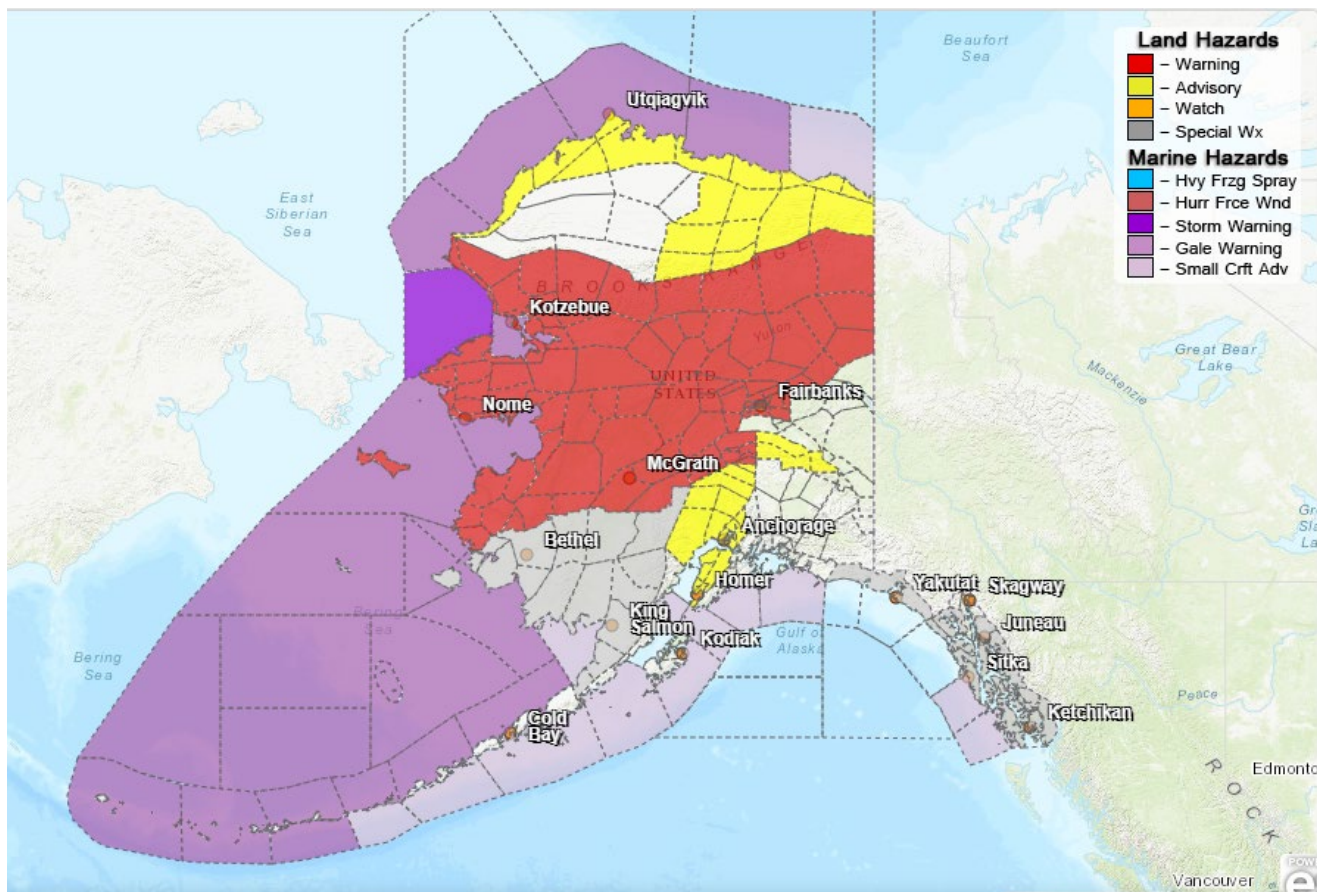
Alaska Cyber Security Information

State Employees may sign up for cyber security notifications and alerts at

<https://oit.alaska.gov/security>

CISA-Cybersecurity Services and Tools: www.cisa.gov/free-cybersecurity-services-and-tools

Significant Weather:



The following Blizzard Warnings are in effect:

- Baldwin Peninsula and Selawik Valley – Blizzard conditions expected with accumulation of 6 – 12 inches and winds gusting as high as 55 mph from noon today through 9:00AM Thursday.

- St. Lawrence Island and Bering Strait Coast – Blizzard conditions expected with accumulation of 3 to 5 inches, ice accumulation, winds gusting as high as 55 mph, and wind chills as low as 30 below zero through 9:00AM Thursday.
- Eastern Norton Sound and Nulato Hills – Blizzard conditions expected with accumulation of 6 – 12 inches and winds gusting as high as 55 mph from 9:00AM this morning through 9:00AM Thursday.
- Southern Seward Peninsula Coast – Blizzard conditions expected with accumulation of 10 – 18 inches, ice accumulation and winds gusting as high as 55 mph through 9:00AM Thursday.
- Chukchi Sea Coast – Blizzard conditions expected with accumulation of 2 – 8 inches and winds gusting as high as 55 mph through 9:00AM Thursday.
- Yukon Delta – Blizzard conditions expected with 3 – 5 inches of snow accumulation and winds gusting as high as 55 mph through 6:00AM Thursday.

The following Winter Weather Storm Warnings are in effect:

- Denali, Middle Tanana Valley, Southeastern Brooks Range, Yukon Flats and surrounding uplands, Upper Koyukuk Valley, Central Interior, Upper Kuskokwim Valley, as well as Upper/Lower Kobuk and Noatak Valleys – Heavy snow expected with accumulation of up to 20 inches in some areas, high winds, reduced visibility, and dangerously cold wind chills in effect through the next 48 hours depending on location.
- Northern and Interior Seward Peninsula - Heavy snow expected. Total snow accumulations of 8 to 14 inches. Winds gusting as high as 50 mph through 9:00AM Thursday.

The following Winter Storm Watches are in effect:

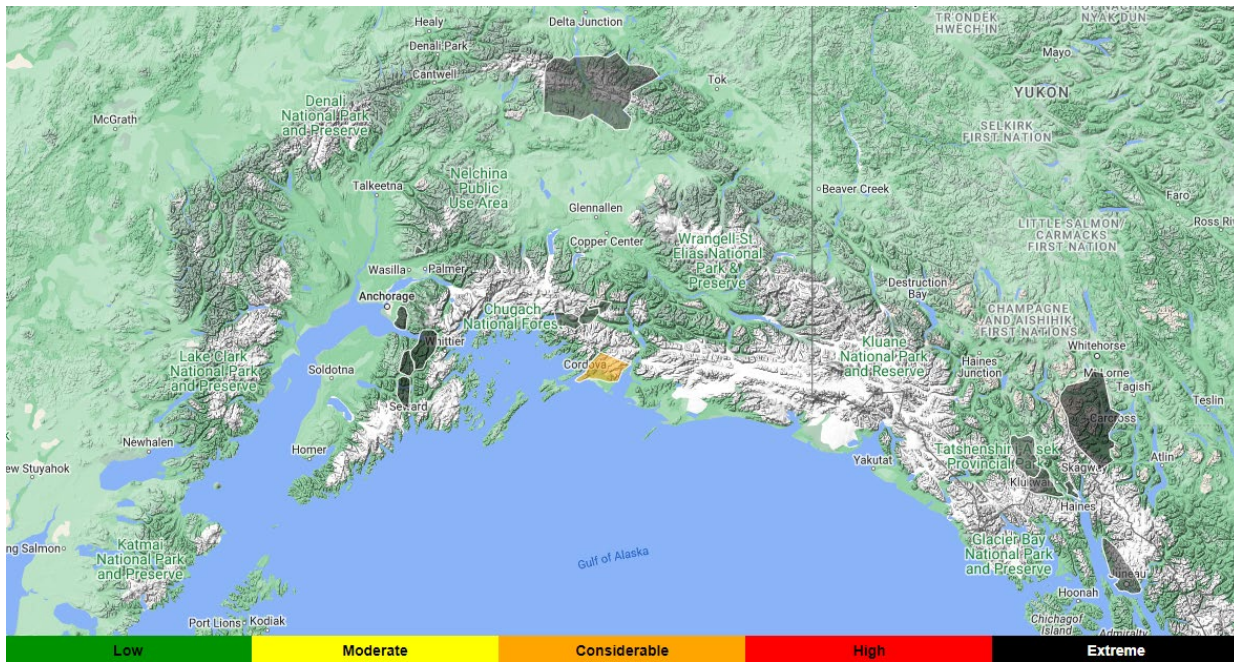
- Central and Eastern Beaufort Sea Coast – Blowing snow with poor visibility. Snow developing overnight with snow accumulations of up to one inch. Wind Chill to 50 below this morning. Winds gusting as high as 35 mph through 6:00PM Thursday.
- Northern Arctic Coast - Blowing snow with poor visibility and winds chill near 45 below. Winds gusting as high as 40 mph. For the Winter Storm Watch, blizzard conditions possible this evening through Thursday Morning.
- Upper Kuskokwim Valley - Heavy mixed precipitation expected. Total snow accumulations of 8 to 14 inches and ice accumulations of a light glaze. Winds gusting as high as 40 mph near the Alaska Range through 9:00PM tonight.

The following Winter Weather Advisories are in effect:

- Matanuska and Susitna Valleys - Mixed precipitation expected with snow accumulations of 4 - 8 inches near Sutton and toward Hatcher Pass. Total snow accumulation 1 to 3 inches in Palmer and Wasilla and 6 – 9 inches from Talkeetna North from 6:00AM to 9:00PM Thursday.
- Anchorage - Snow and rain expected with snow accumulations of 2 inches in town and 6 - 10 inches at higher elevations. Winds gusting as high as 25 mph in town and 40 mph at higher elevations from 3:00AM to 9:00PM Thursday.
- Western Kenai Peninsula - Mixed precipitation expected. Total snow accumulations of up to 3 inches and ice accumulations of a light glaze from midnight tonight to 5:00PM Thursday.
- Northeast Brooks Range - Snow and blowing snow expected. Very cold wind chills. Total snow accumulations of up to 5 inches. Winds gusting as high as 45 mph through 6:00AM Friday.

For more information and the most current weather, go to: <http://www.weather.gov/arh>.

Avalanche Forecast:



- Cordova area: Considerable advisory level above 2,000 ft, moderate advisory level from 1,000 to 2,000ft and low advisory level below 1,000 ft near Cordova.

Check the Avalanche Forecast Center closest to your area for the most up to date information on avalanche potential. <https://alaskasnow.org> or <https://www.weather.gov/afc/avalancheweather>

The Next Situation Report: will be **23 February 2023**. A significant change in the situation or the threat level will prompt an interim report. This report is posted on the internet at <https://ready.alaska.gov/sitrep>.

To register for email distribution, go to <http://list.state.ak.us/mailman/listinfo/dhsem.situation.report>. Direct questions regarding this report to the SEOC at 907-428-7100 or seoc@alaska.gov